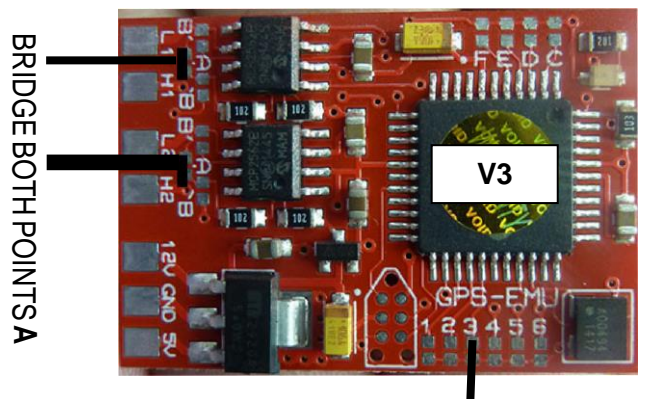
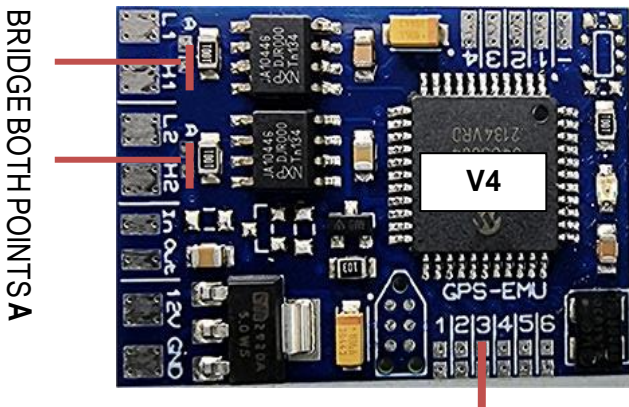


ULTIMATE PRO KEY (Blue Board Or Red Board)

BMW

Please connect as in diagram below, don't forget the jumper settings.



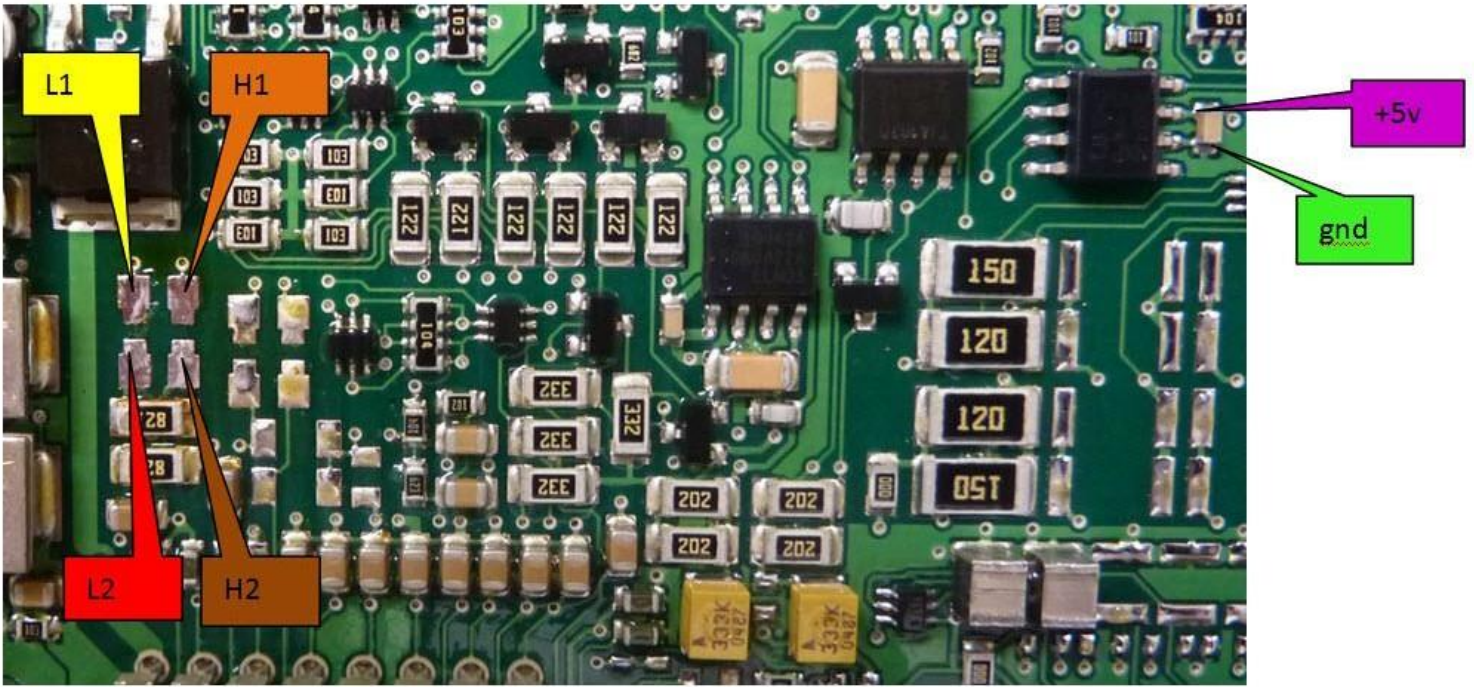
BRIDGE BOTH POINTS A

- 1) All Jumpers OFF = Test Mode
- 2) BMW F Series (CAS or Dash) = J3 ON

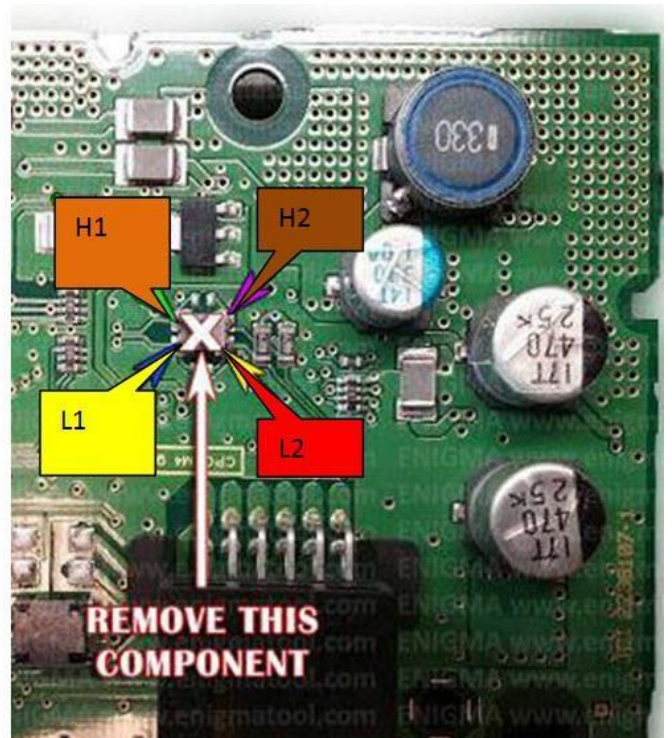
BMW CAS 4 – MCU 5M48H – JUMPER 3 ON

Suitable for 7 Series F01, 5 Series GTF07, 5 Series F10, 1 Series F20, 3 Series F30 fitted with CAS4 with MCU mask 5M48H.

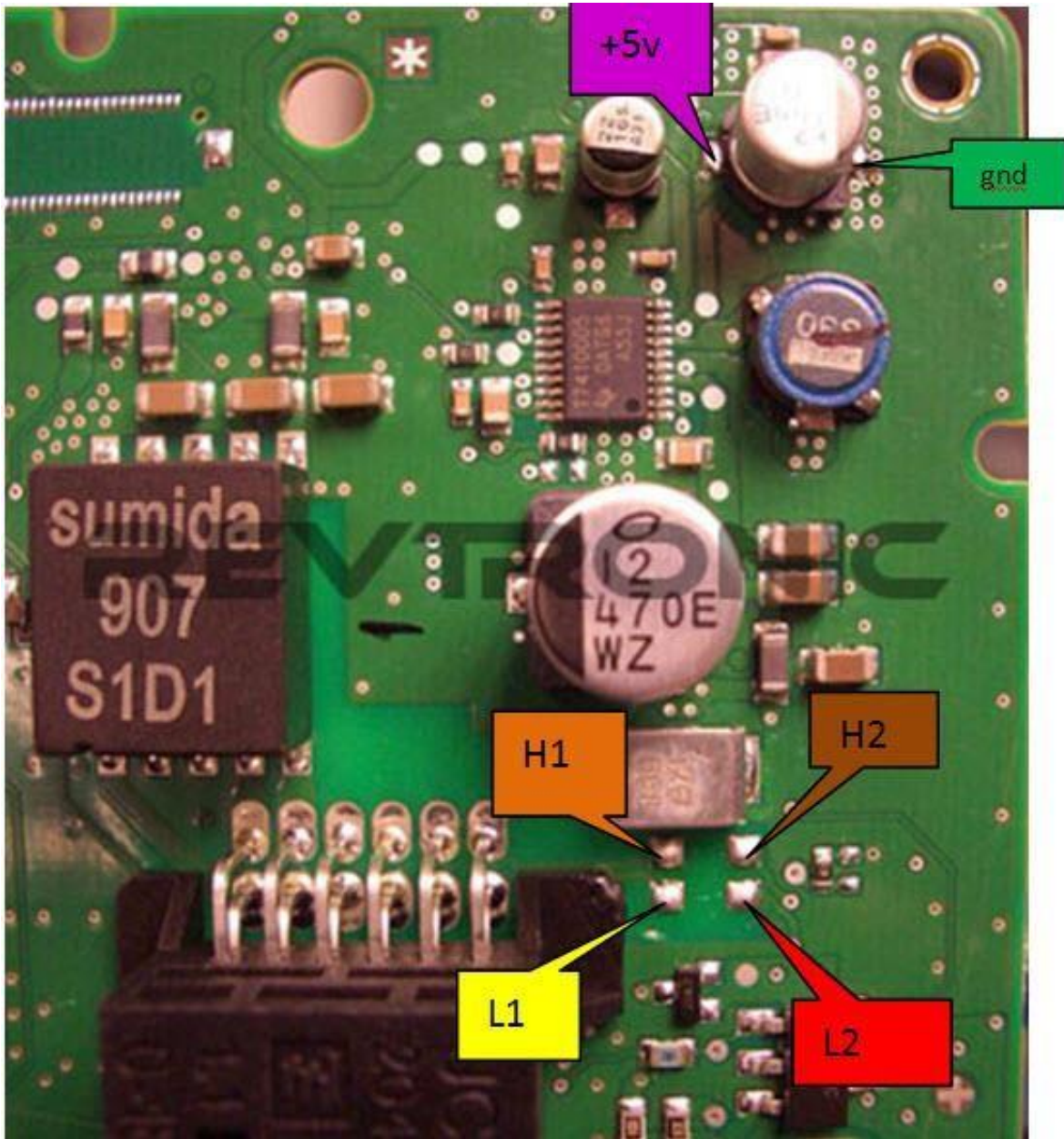




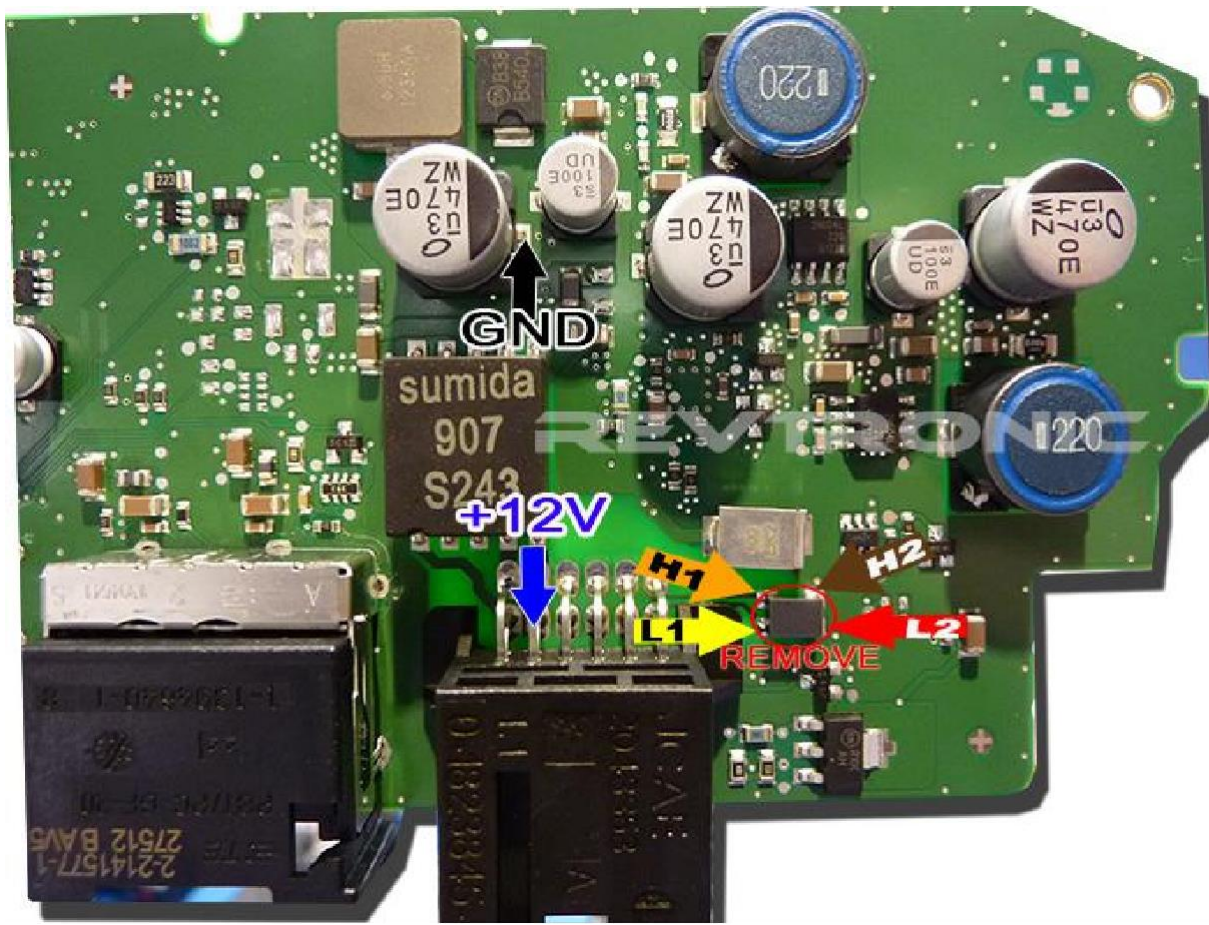
BMW 1 Series F20 / 3 Series F30/ 4 Series F32 Back of dash – JUMPER 3 ON



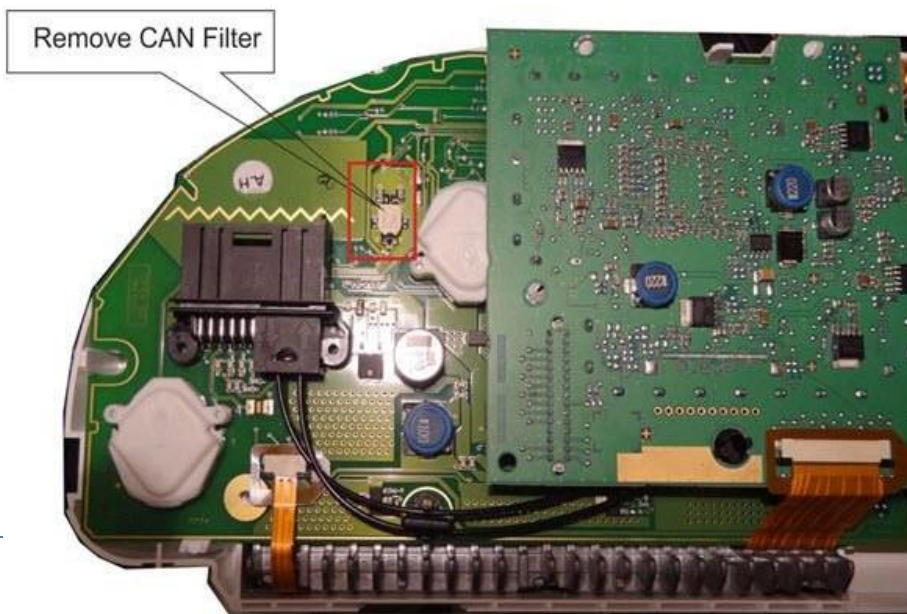
BMW 1 Series F20 / 3 Series F30/ 4 Series F32 Back of dash – JUMPER 3 ON

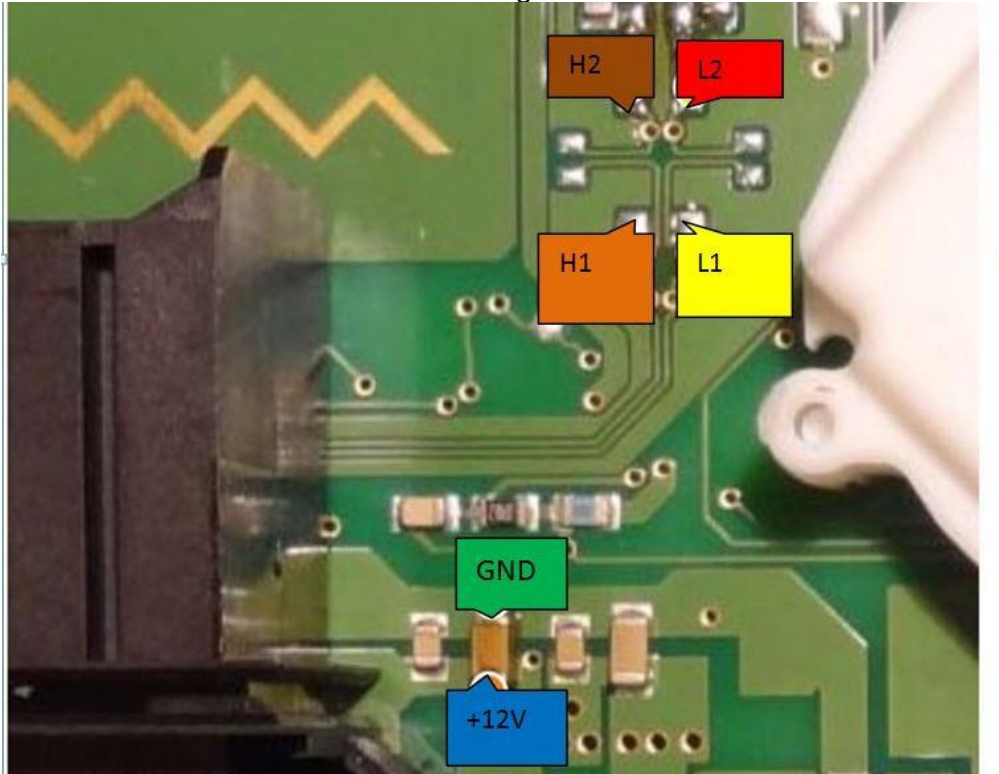


BMW F30 3 SERIES , 4 SERIES F32 WITH MOST CONNECTOR – JUMPER 3 ON

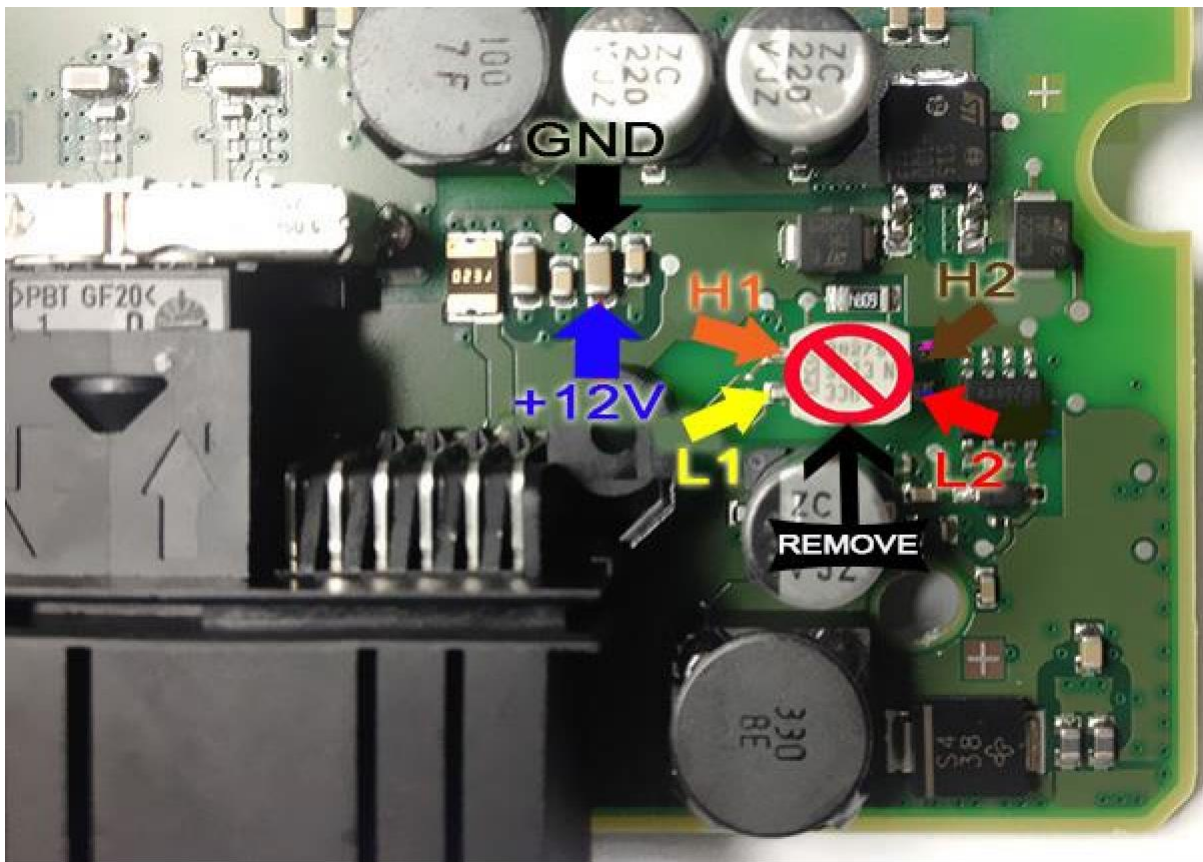


BMW 5 Series F10 / 7 Series F01 Back of dash – JUMPER 3 ON

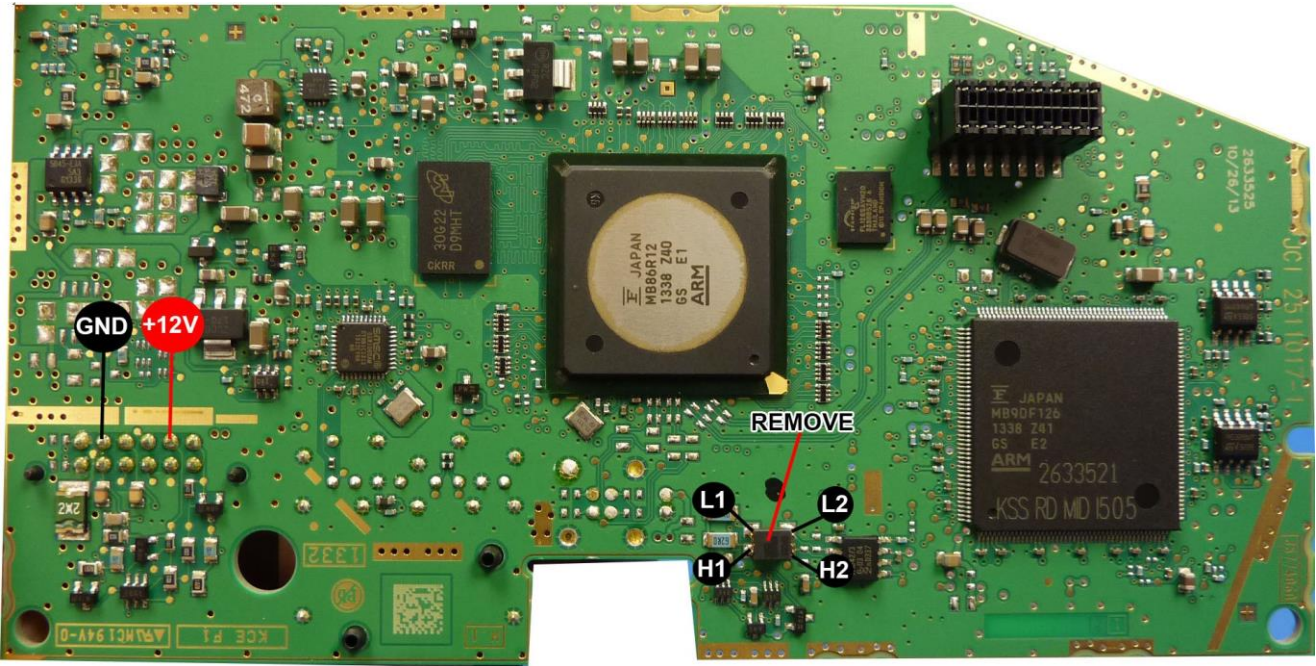




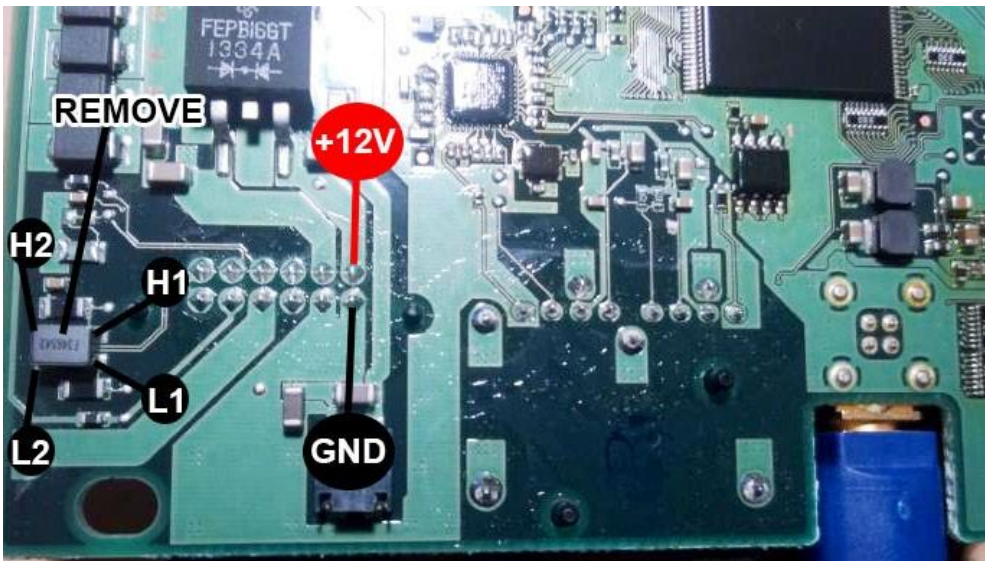
BMW X5 (F15) Back Of Dash – JUMPER 3 ON



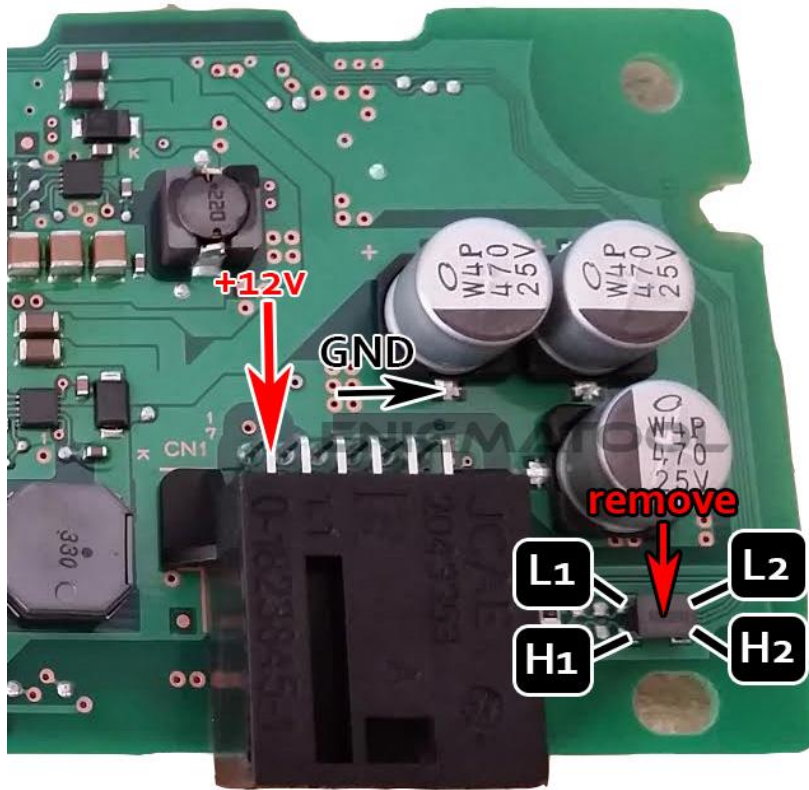
BMW X5 (F15) Back Of Dash V2 – JUMPER 3 ON



NEW Mini - F56/F55 Paceman/Countryman- Back Of Dash – JUMPER 3 ON



NEW Mini - F56/F55 Paceman/Countryman- Back Of Dash V2 – JUMPER 3 ON



BMW 5/7 Series (G Chassis)

