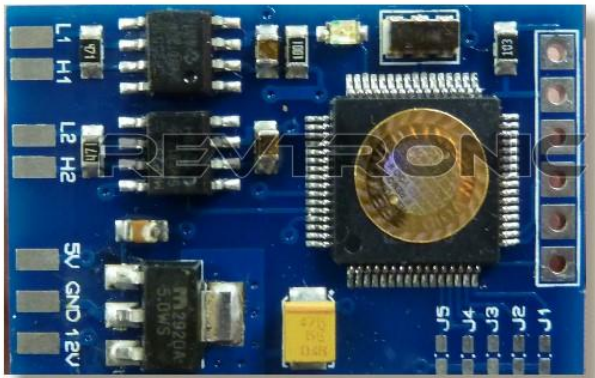


REVTRONIC

ULTIMATE PRO KEY (Blue Board Or Red Board) MERCEDES

Please connect as in diagram below, don't forget the jumper settings.

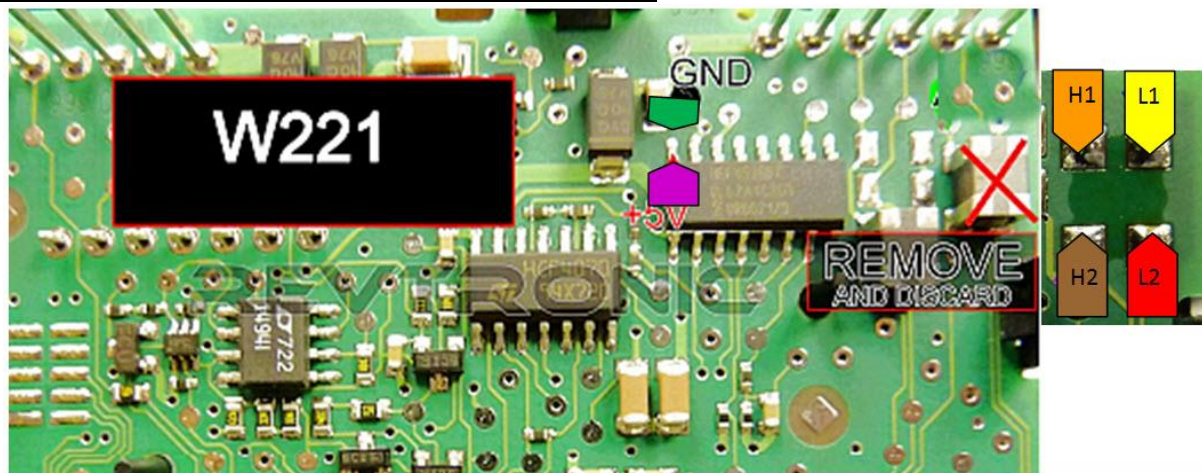


BRIDGE BOTH POINTS A

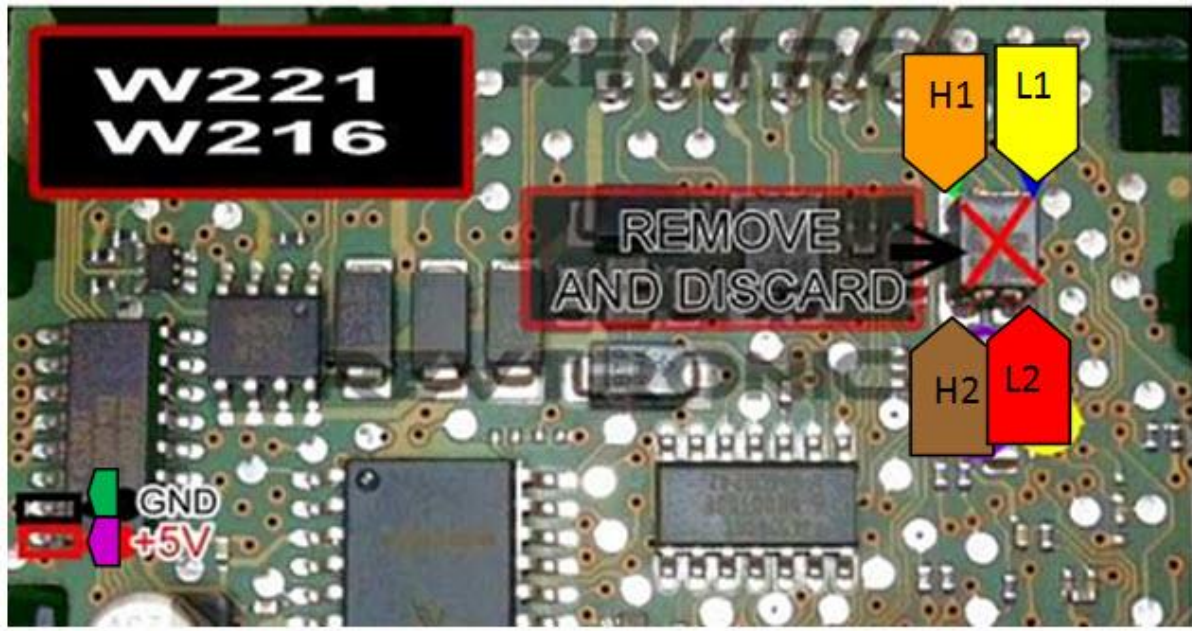


- 1) All Jumpers OFF = Test Mode
- 2) Mercedes W204,W221,W212,W172,EZS OR DASH = J2 ON
- 3) Mercedes W164 GL/ML = J1 + J2
- 4) Mercedes ML/GL/A/B/CLA/W205/W222 CLASS (W166) EZS OBD Filter = J5-J4 OFF , J3-J2-J1 ON

Mercedes S Class W221 Version 1 – JUMPER 2 ON

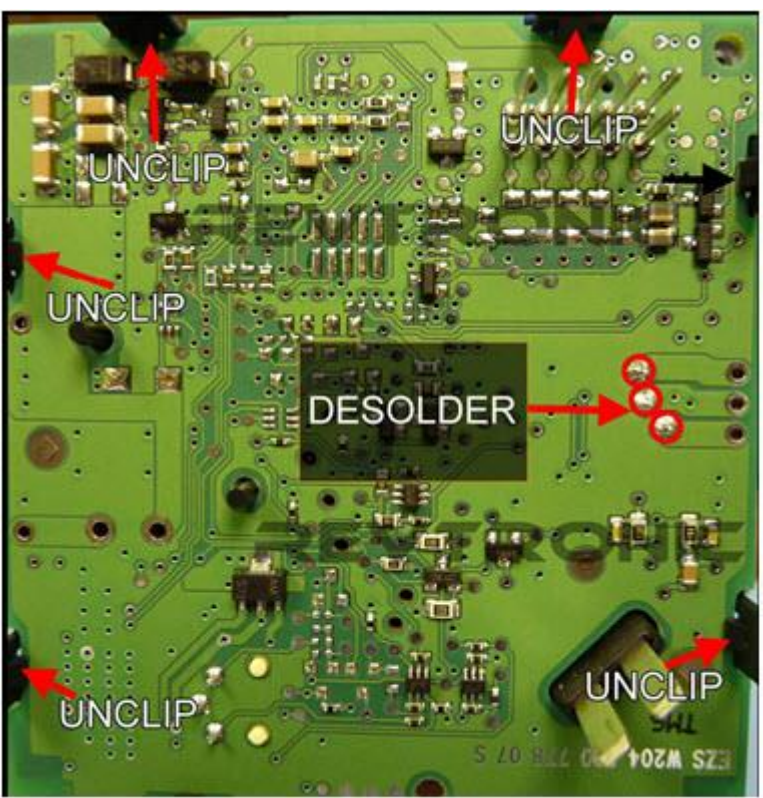


Mercedes S Class Version 2 – JUMPER 2 ON

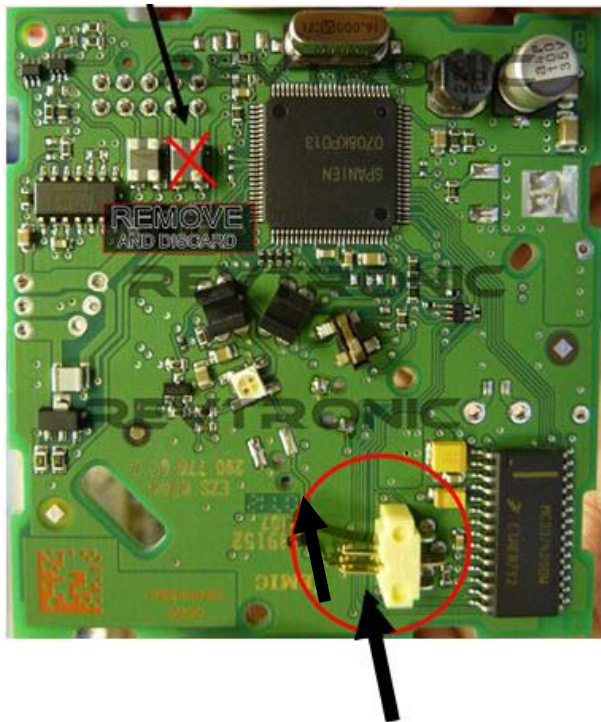


Mercedes C Class W204 and E Class W212 (Black EZS) – JUMPER 2 ON

Desolder the 3 points, then gently unclip the points as shown below.



Remove the PCB and locate the brown component. Remove this component and reassemble the board.



Mind the switch shown above.

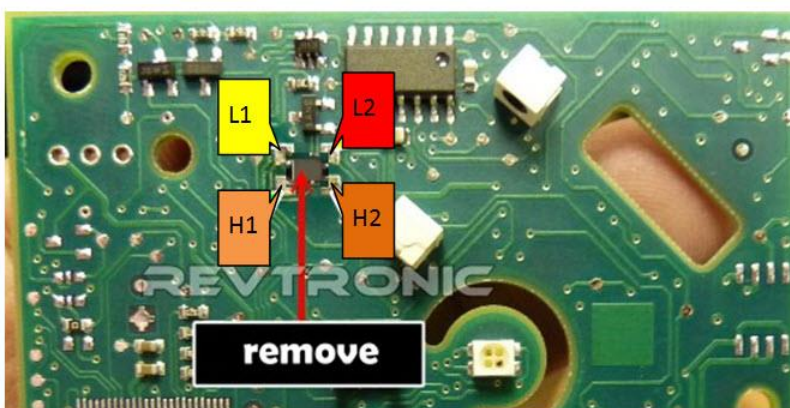
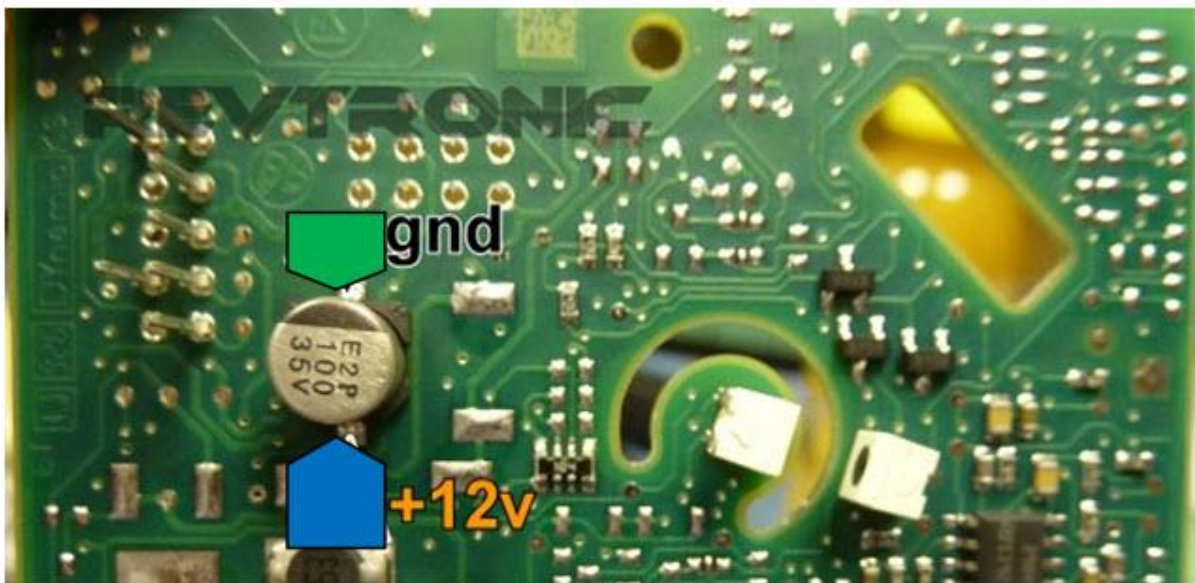
Be careful when putting back the PCB.

Also Watch solder points L2 + H2 when soldering



Mercedes E Class, W212 – (Grey Back EZS) – JUMPER 2 ON

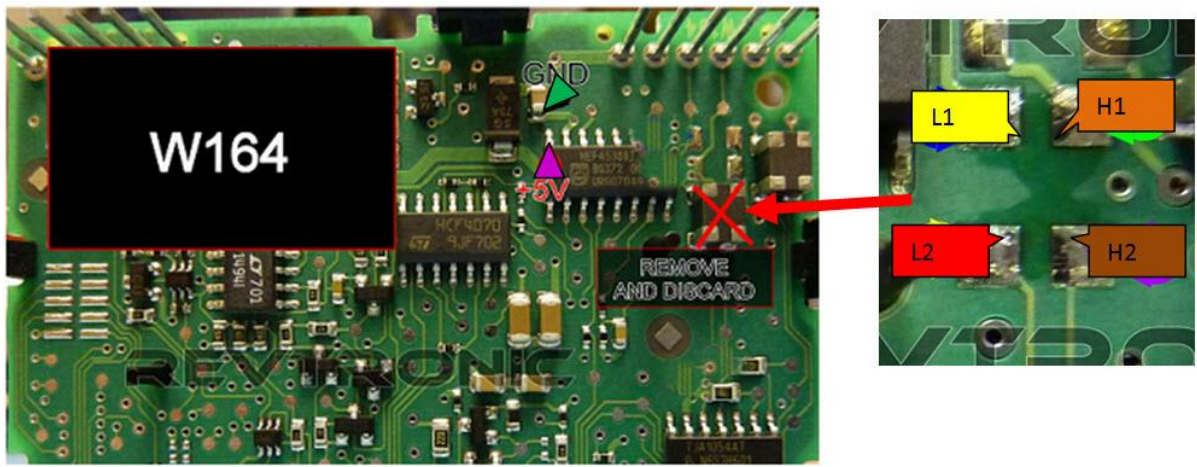
Gently unclip to access the other side of the board. Locate brown component and remove.



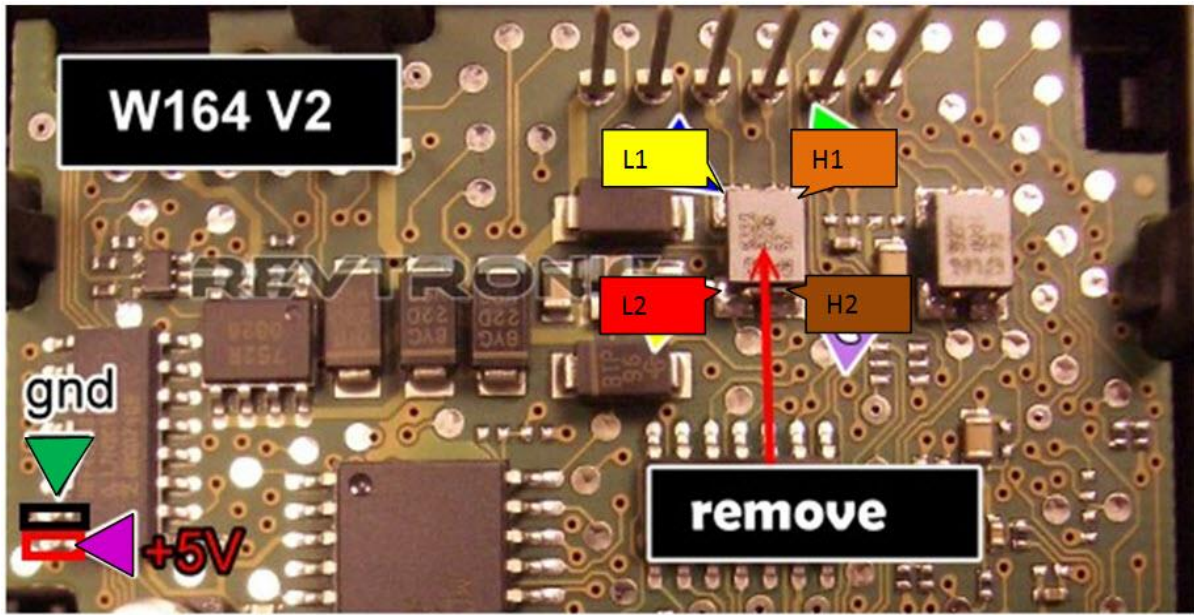
Other side of the board

Option 2 – Fit Inside EZS – JUMPER 1 and 2 ON

Mercedes ML W164, R Class W251, GL W164 

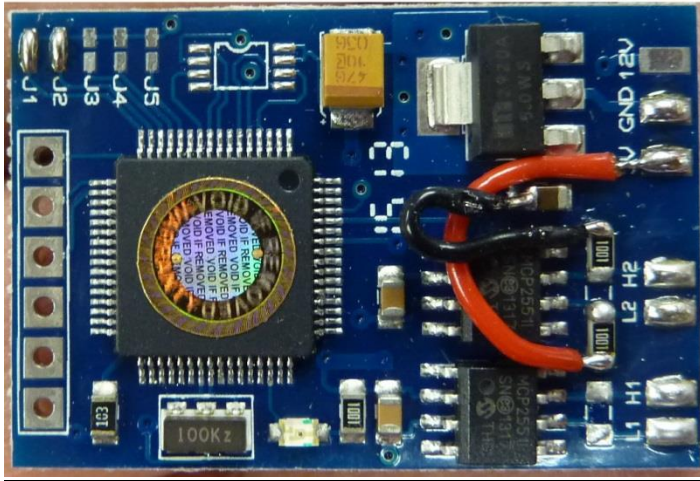


Mercedes W164 -Version 2 - JUMPER 1 and 2 ON



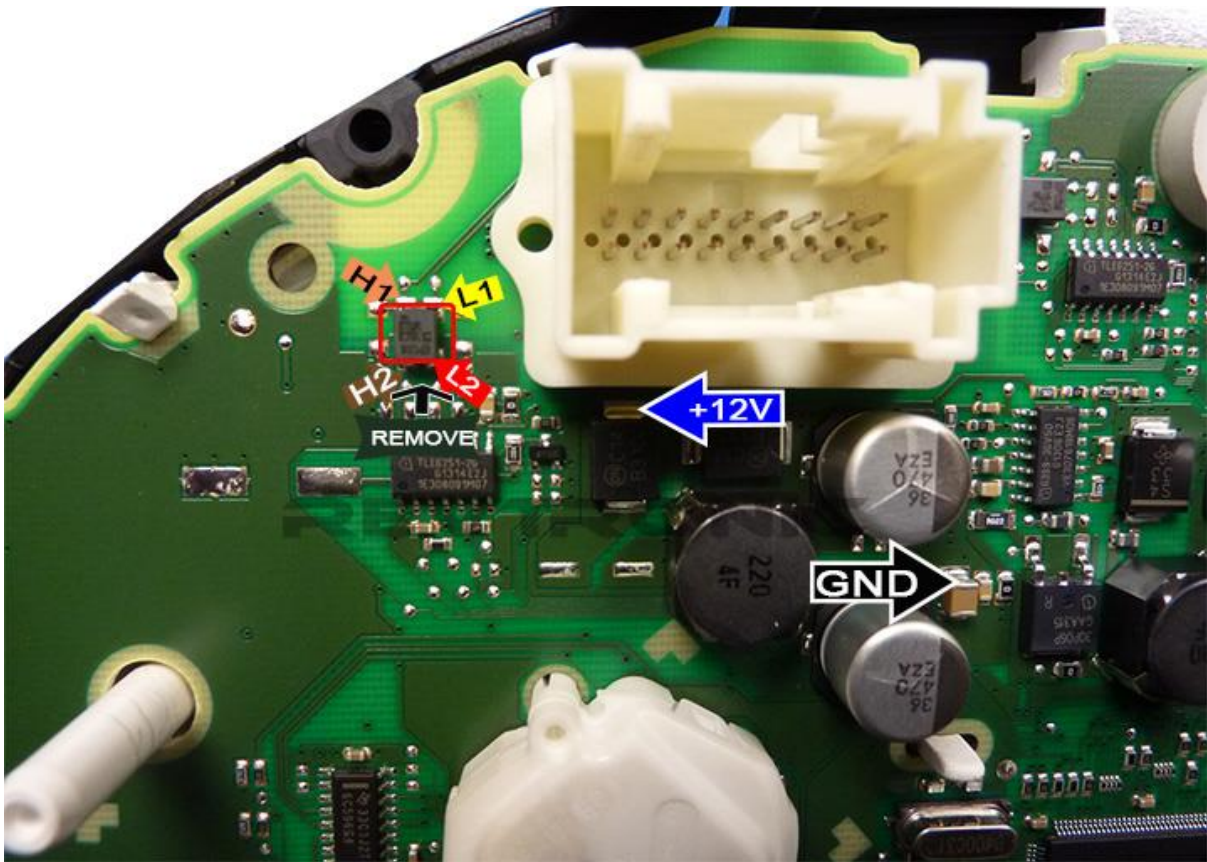
If your ML W164 does not start then please do the following modification, applies to V1 and V2.

Remove both resistors, then solder as in photo below. Then add the wire links.

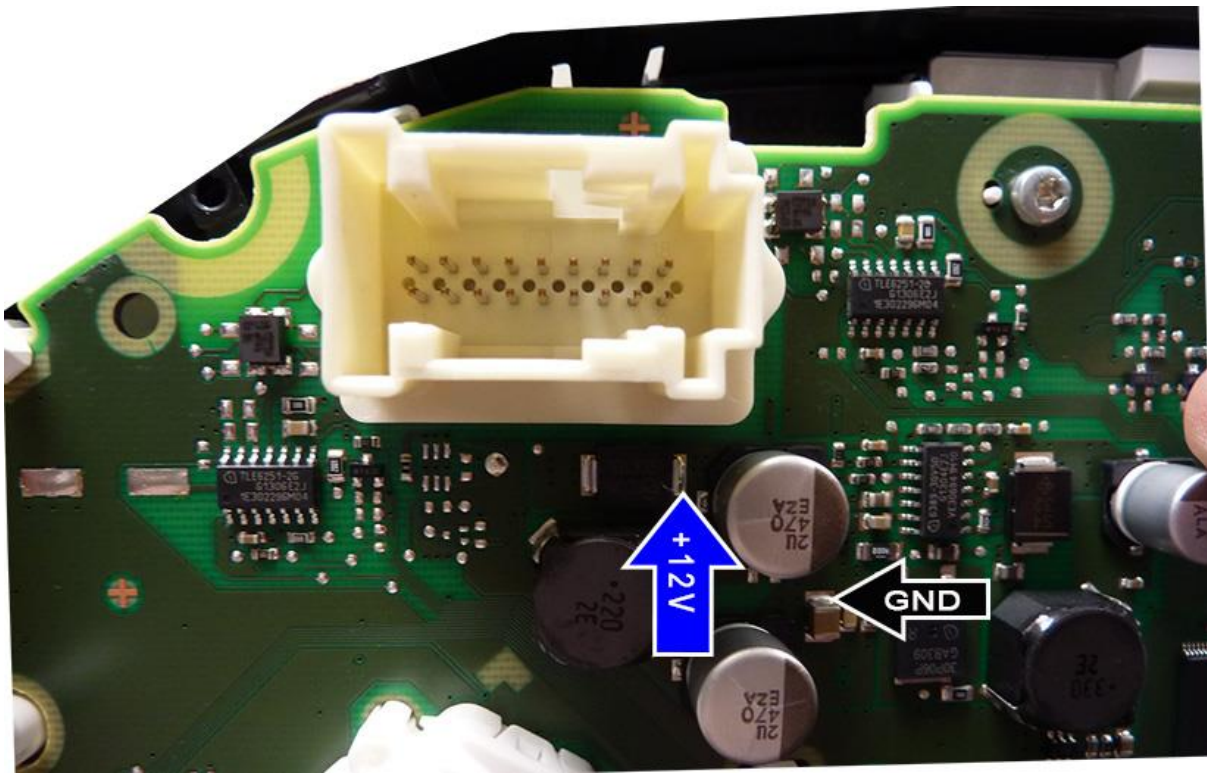


Mercedes W166 Dash Connection, W166 A CLASS – J2 ON , Rest OFF

The W166 needs 2 filters , one for dash and one for the ezs.



Alternative Power Connection (Can connections same as above)

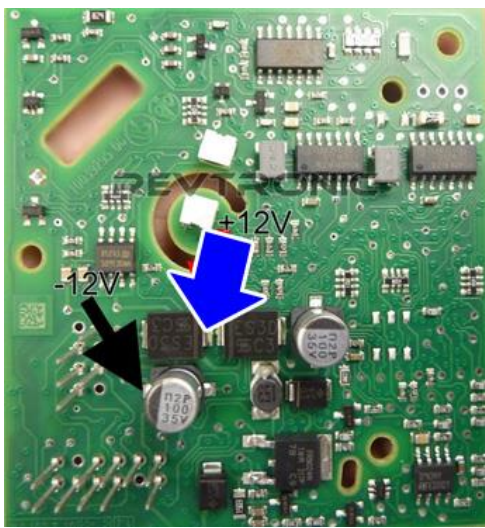


By fitting this to the dash the displayed value will be shown.

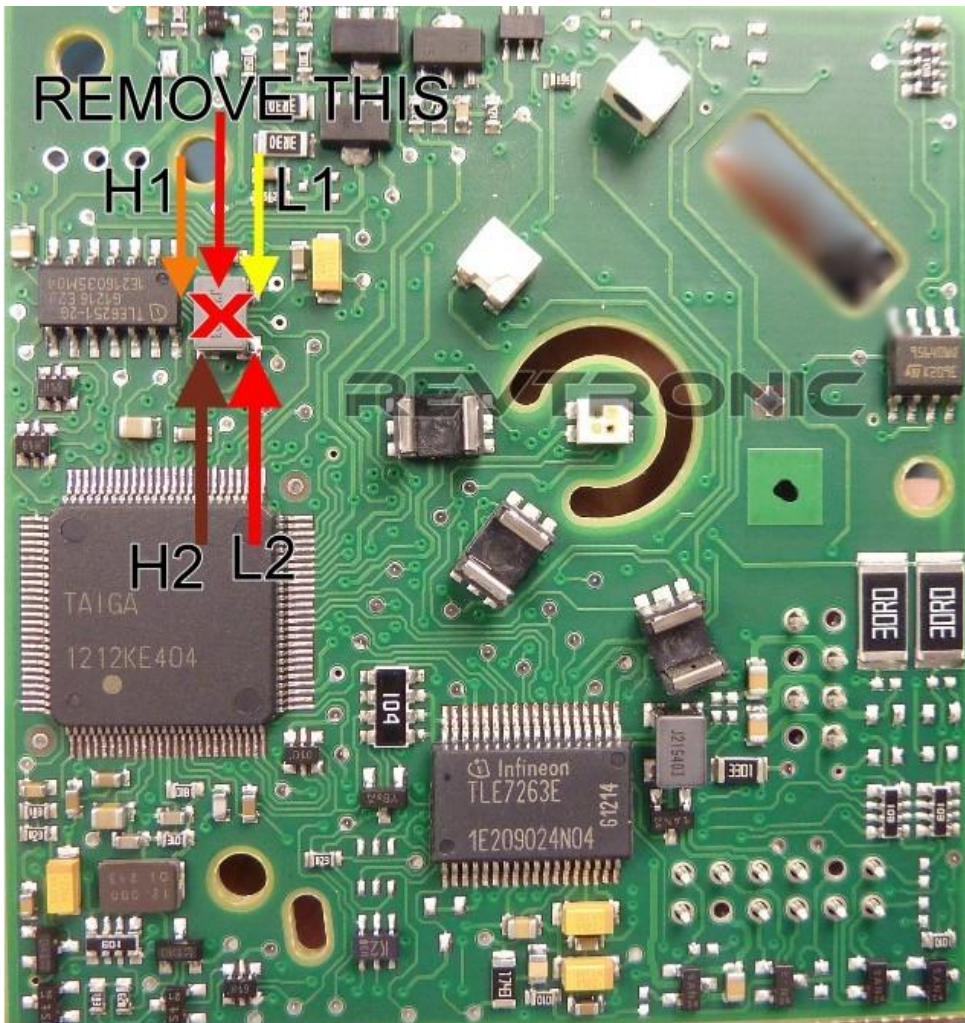
If you would like the diagnostic reading to show correct value the fit a Pro Key to the

EZS. Mercedes W166 – EZS Connection – OBD Filter = J5,J4 OFF, J3-J2-J1 ON

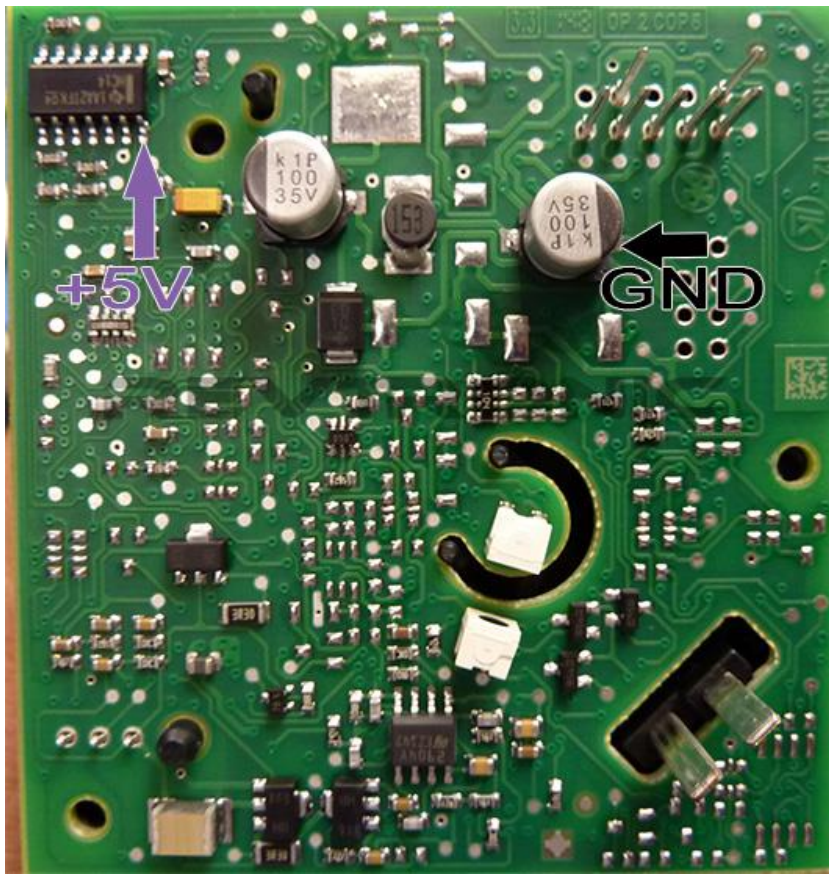
Top side – Power Connection



Under Side -Connect CAN Wires



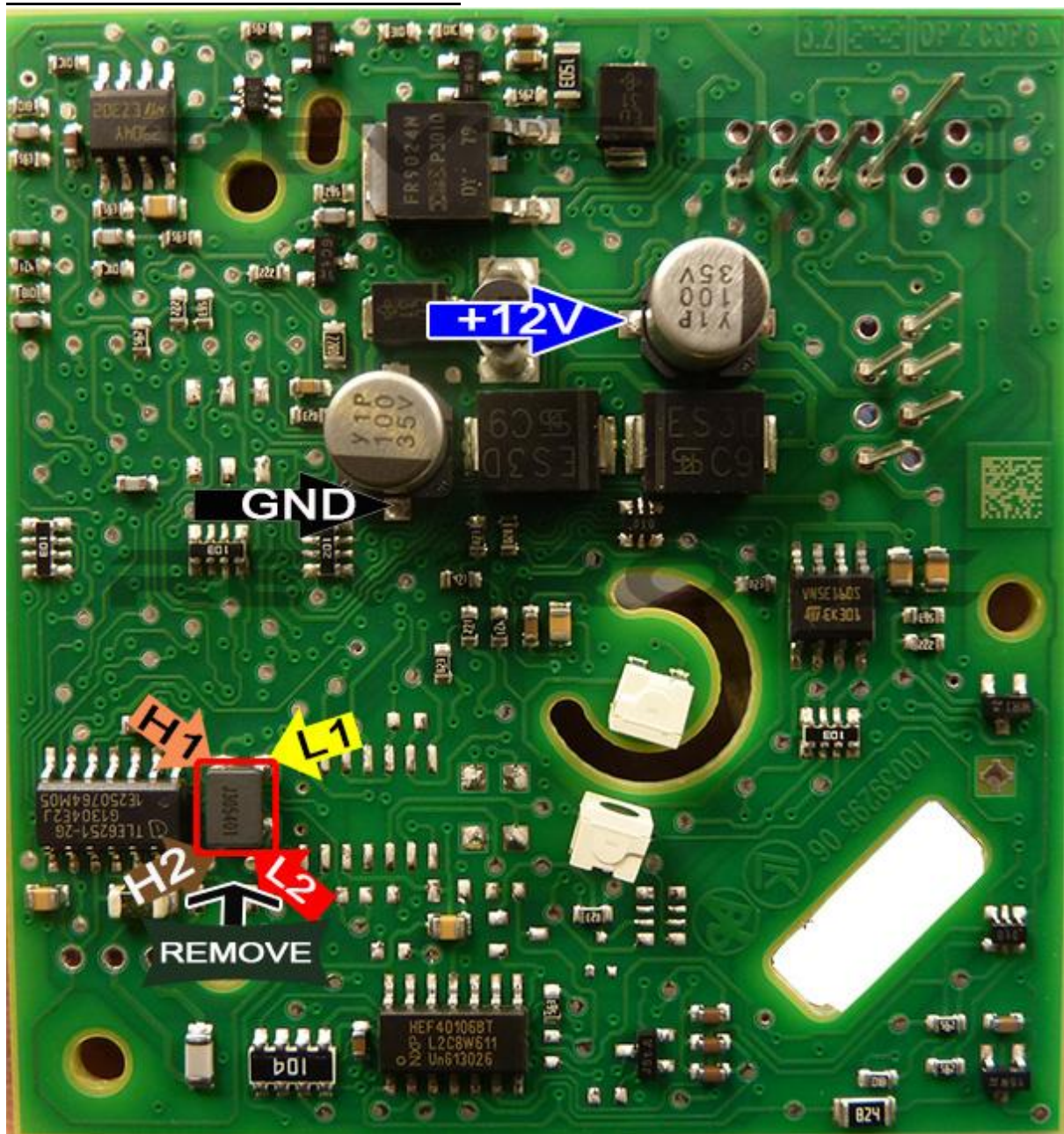
W172 SLK , New CLS – JUMPER 2 ON Top of Board



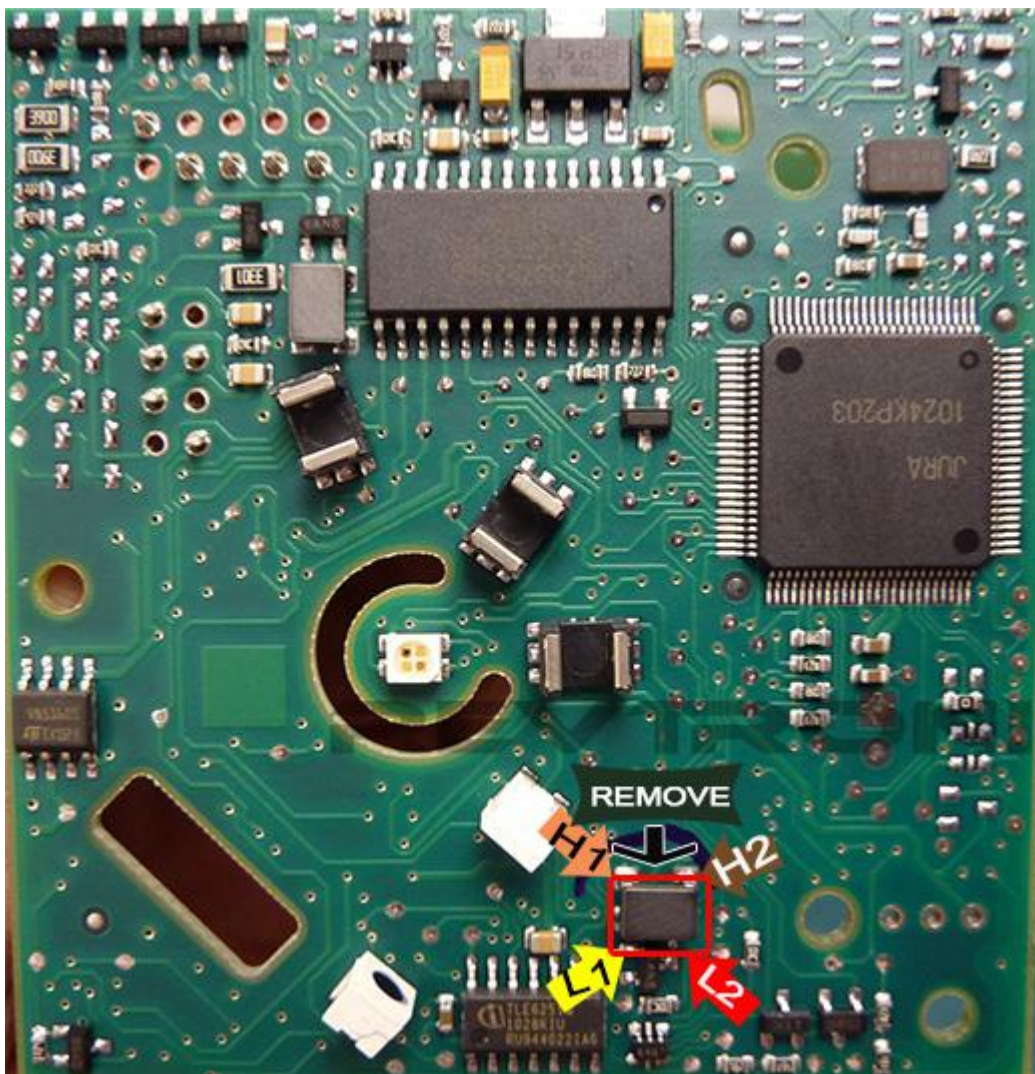
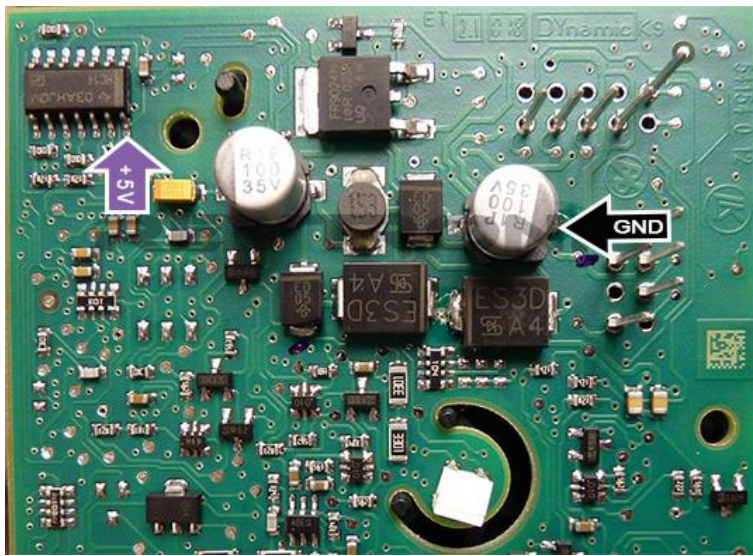
Underside of Board



Most Mercedes with FBS4 (Sticker in EZS shows FBS4) (E Class , CLS etc) JUMPER 2 -ON



SLS W197 – EZS CONNECTIONS – JUMPER 2 – ON



C CLASS W205 AND S CLASS W222- NEED TO USE 2 CAN FILTERS INSIDE EZS

